

TRIMMERS & PRUNERS CONTROL SYSTEM

AGRICULTURE TRIMMERS AND PRUNERS



CUTTING HYDRAULIC MOTOR

SINGLE AXIS INCLINOMETER

MACHINE MANAGEMENT ELECTRONIC CONTROL UNIT

HYDRAULIC PROPORTIONAL VALVE SYSTEM
• ARM MOVEMENTS
• CUTTING MOTOR

MULTI-FUNCTION CONTROL UNIT WITH JOYSTICK

MULTI-FUNCTION HANDLE WITH FIXING MAGNET

WIRING HARNESS



The Customizing Attitude

TRIMMERS & PRUNERS CONTROL SYSTEM

OPERATIONS

By means of the inclinometer located on the bar, the Electronic Control Unit (ECU) measures the inclination and its variations due to the operator's commands, on either the left or the right side.

When the operator needs to level the bar in one of the four permitted positions (vertical high/low or horizontal left/right) he just needs to manually approach the position and then, by pushing the self levelling button, let the machine automatically level the bar with a smooth proportional command.

This way it is possible to carry out the automated positioning of the bar and also its automatically maintained level when the machine moves forward.

DIAGNOSTICS

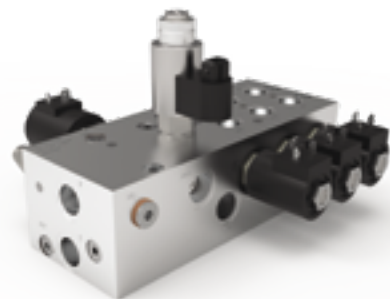
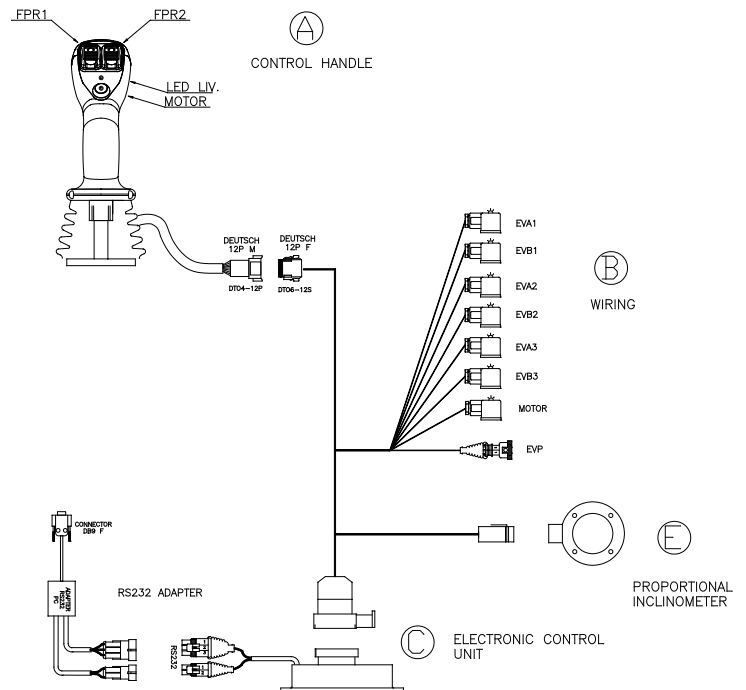
The high efficiency LED on the handle grip displays the various states of the system:

- LED OFF: levelling system not active.
- LED BLINKING SLOW: levelling system active.
- LED ON: position achieved.
- LED BLINKING FAST: alarm (inclinometer not connected).

TECHNICAL SPECIFICATIONS

- Power Supply: 12-24Vdc
- Current consumption (max): 8 A @ 12Vdc
- Maximum error on levelling: $\pm 1.5^\circ$
- Number of available levelling positions: 4
 - vertical towards high
 - vertical towards low
 - horizontal towards left
 - horizontal towards right
- Maximum flow: 50 Lt/min
- Maximum pressure: 250 bar

APPLICATION EXAMPLE



HYDRAULIC SCHEMATICS

